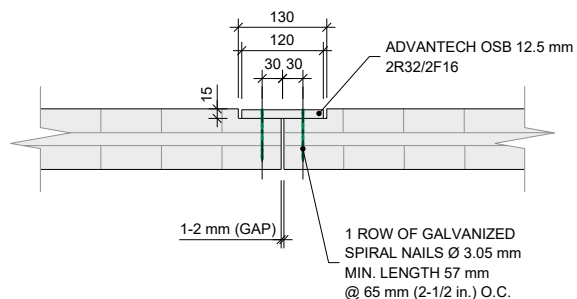
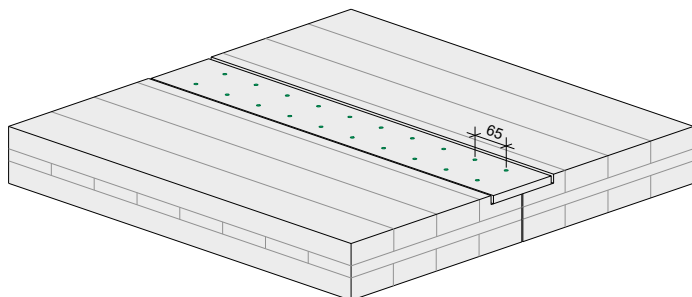
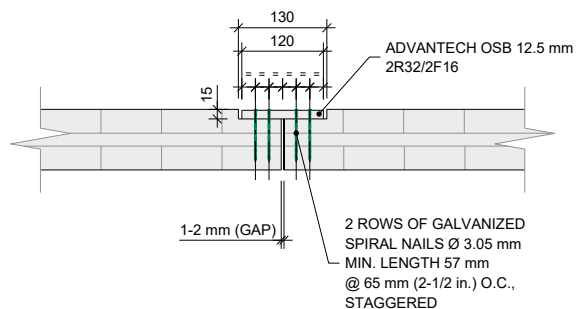
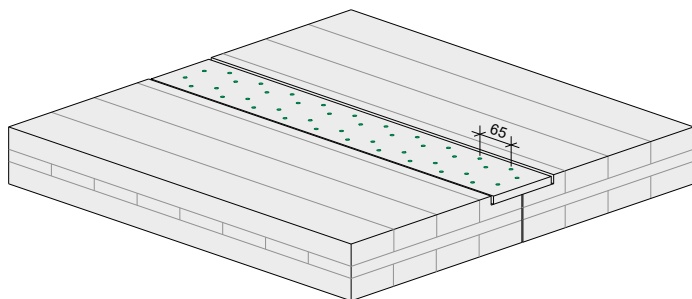


## CLT Butt Joint – AdvanTech OSB Spline

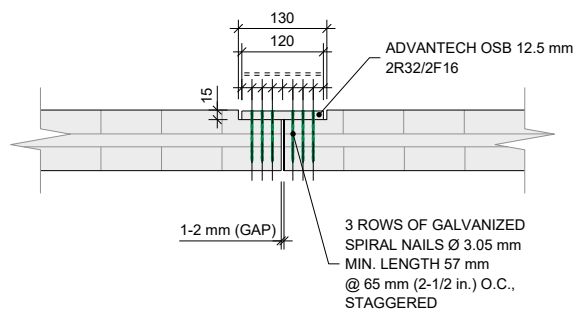
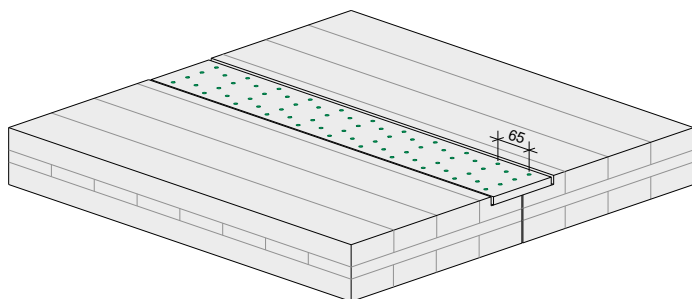
**Factored Shear Resistance: 10 kN/m**



**Factored Shear Resistance: 20 kN/m**



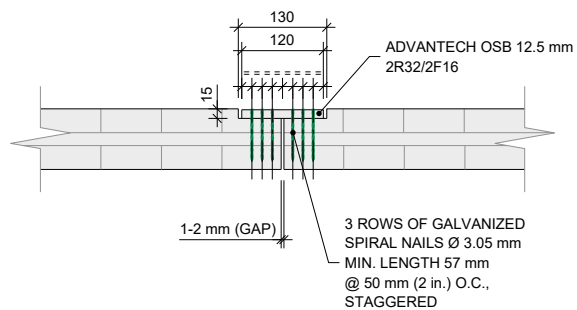
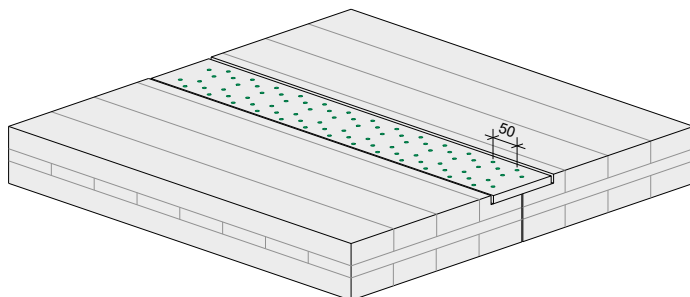
**Factored Shear Resistance: 30 kN/m**



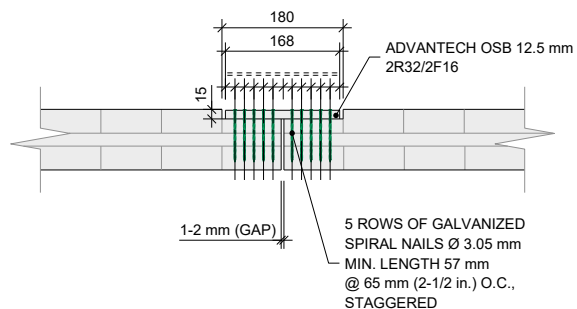
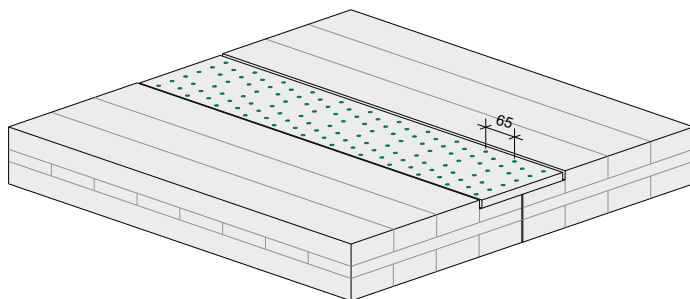
Note:

1. The factored shear resistances indicated in these details are based on nails used in diaphragm and shearwall construction ( $J_D = 1.3$ ), dry service conditions, and short-term duration of load.

**Factored Shear Resistance: 40 kN/m**



**Factored Shear Resistance: 50 kN/m**



Note:

1. The factored shear resistances indicated in these details are based on nails used in diaphragm and shearwall construction ( $J_D = 1.3$ ), dry service conditions, and short-term duration of load.